



## Managing your housing register

### Benefits

- Bring housing register partners together
- Move seamlessly between different allocation schemes
- Highlight bottlenecks in application processing
- Maximise staff efficiency using workflow tools
- Implement your policies by straightforward configuration

Changing your allocations policy requires careful management, and a flexible IT solution is critical to ensuring a seamless transition.

The Nova-HX housing register module has been designed with just such flexibility in mind. Moreover, by integrating transparently with other Abritas modules including homelessness and choice based lettings, the Nova-HX housing register streamlines the process of managing applications and registers. With e-government delivery in mind the module uses our proven Internet based workflow technology.

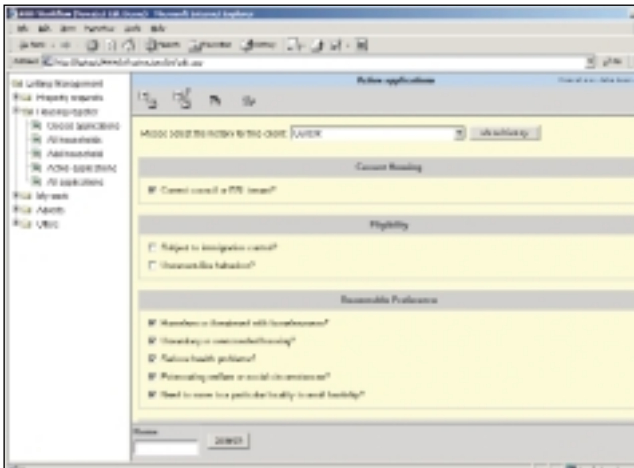
### Main Attributes

Nova-HX simplifies the process of maintaining your housing register using workflow configured specifically to the way you operate.

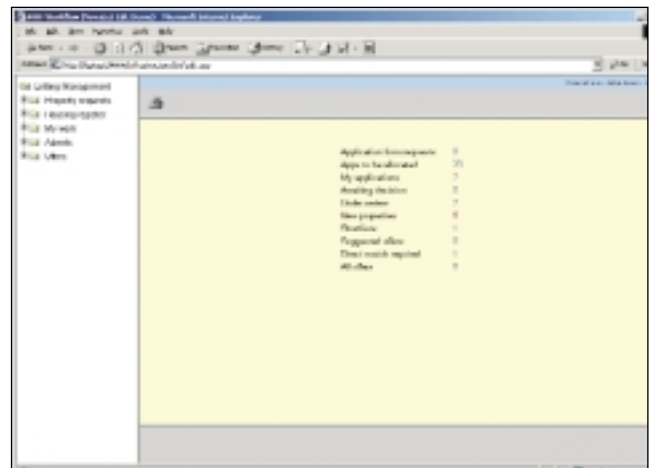
Features include; user defined decision questionnaires, automatic letter generation, support for multiple allocation schemes, on-line matching of applicants to properties and a configurable common housing register option.

The Nova-HX housing register module has been designed to be flexible. By using configurable workflow based processing, it can be easily set up to exactly meet the specific needs of your housing register application process.

All of Nova-HX's housing register features are available using a web browser, making it easy for your staff to access - regardless of their location.



User maintained decision questionnaires



Summary of outstanding work

## The key to success

### Cost-effective reporting

Nova-HX has a built in reporting package which makes running reports over the Internet straightforward. Slicing and dicing data, and drill down to underlying detail are fully supported. There is no need to buy an expensive third-party tool.

### Streamlined application management

By using workflow principals only those applications which require action are highlighted to officers. Workflow is configured to further application processing and decision making until applications are housed or rejected.

### Correspondence creation

Letters can be automatically generated from simple templates at any point in the workflow - for example when an application is refused.

### Multiple allocation schemes

Nova-HX supports any number of allocations schemes in parallel. You can for example run choice based lettings alongside points or banding.

### Decision history

Decisions about an application are recorded on user configurable questionnaires. Key details about the application are automatically suggested based on the answers given in the questionnaire. A full history of decisions is maintained for audit purposes.

### e-Government enabled

To help meet your e-government objectives, all of the Homelessness module's features are accessible using a web browser.

### Bring partners together

By giving access to the housing register over the Internet, Nova-HX makes it straightforward to bring new partners onboard.